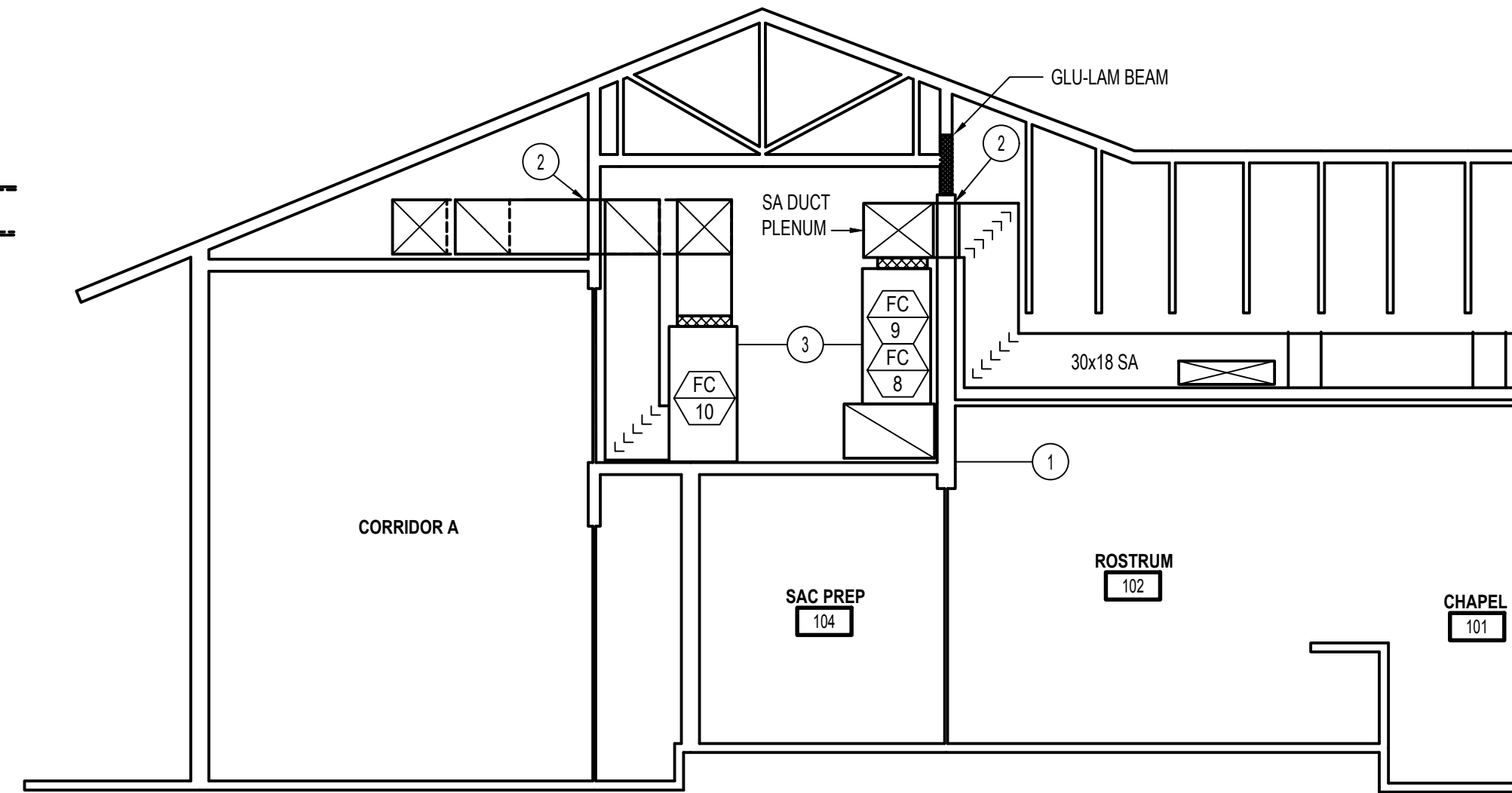
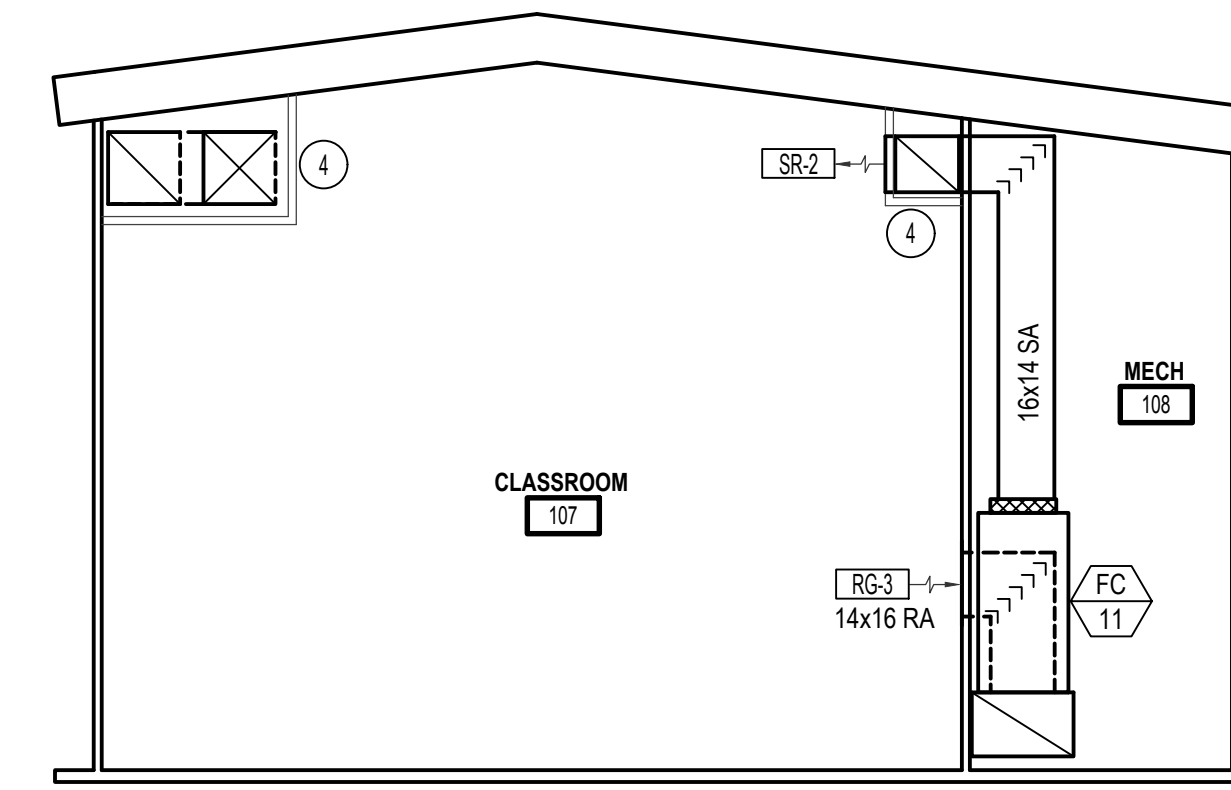


BUILDING SECTION A
NOT TO SCALE
ME2.2

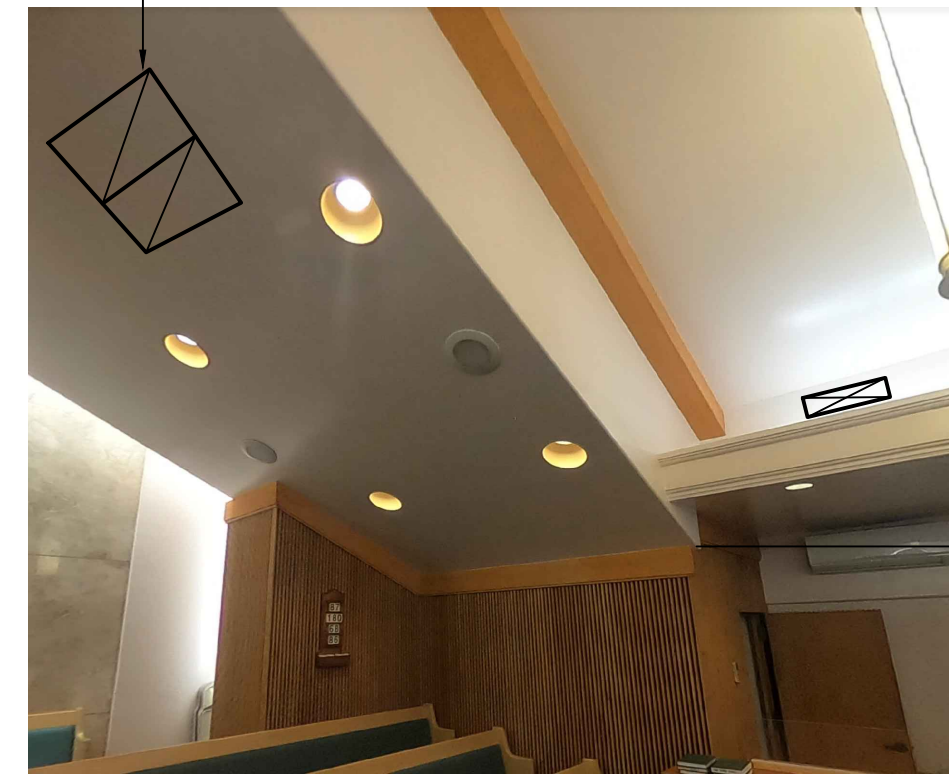


BUILDING SECTION B
NOT TO SCALE
MECH 155 SIMILAR
ME2.2



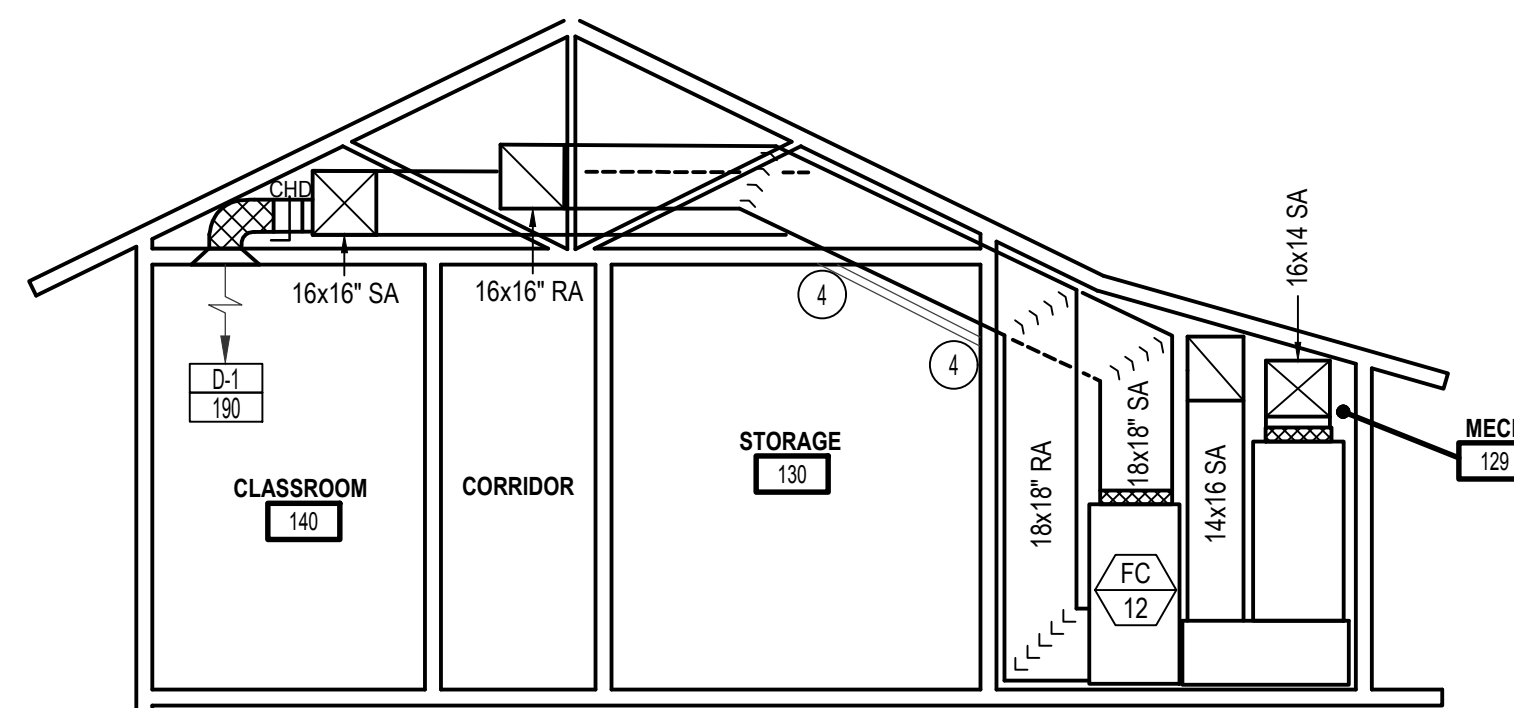
BUILDING SECTION C
NOT TO SCALE
ME2.2

APPROXIMATE LOCATION FOR NEW RETURN GRILLES

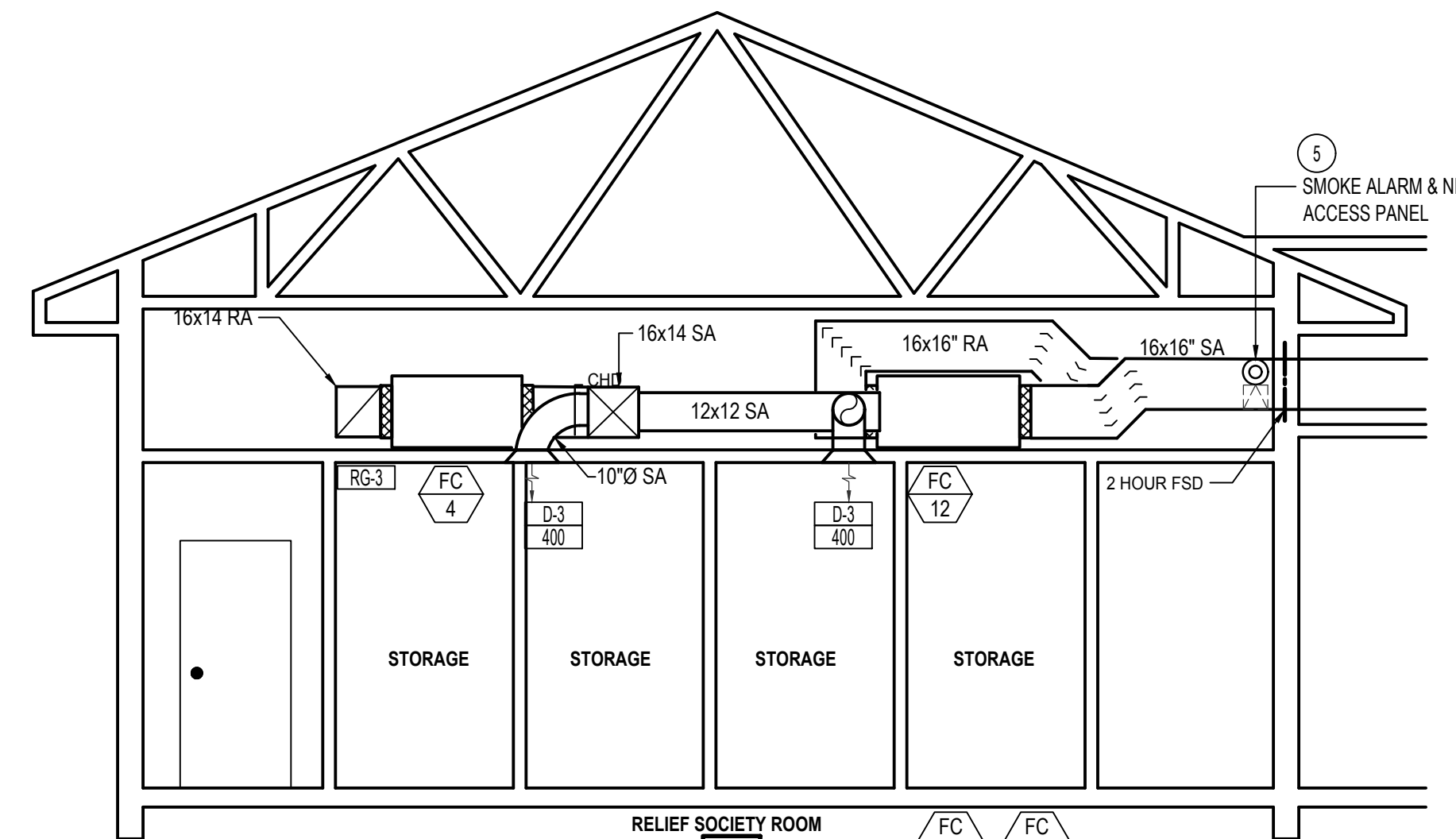


LOCATION WHERE SLOPE CEILING STARTS. ①

ROSTRUM 102



BUILDING SECTION D
NOT TO SCALE
ME2.2



BUILDING SECTION E
NOT TO SCALE
ME2.2

MECHANICAL NOTES:

- ① APPROXIMATE LOCATION WHERE SLOPE CEILING STARTS. SEE PICTURE ON THIS SHEET. FIELD VERIFY EXISTING CONDITIONS OF CEILING SPACE FOR NEW DUCTWORK. MODIFY DUCTWORK AS REQUIRED TO ROUTE AND FIT NEW DUCTWORK INTO EXISTING CEILING SPACE IF CONDITIONS DON'T MATCH EXISTING DRAWINGS.
- ② PROVIDE NEW PENETRATION THRU EXISTING BRICK WALL FOR NEW DUCTWORK IN LOCATION AS SHOWN. PROVIDE LINTEL THRU PENETRATION.
- ③ MAINTAIN 3" CLEARANCE.
- ④ INSTALL FURR-OUT IN LOCATION AS SHOWN.
- ⑤ INSTALL SMOKE DETECTOR ON EACH SIDE THAT IS ACCESSIBLE & INTERLOCK WITH FIRE ALARM. INSTALL ACCESS BOX TO DAMPER FOR MANUAL RESET. SEE DETAIL ON SHEET ME3.2.



**Engineered Systems Associates
Mechanical Engineers**

Dwayne Sudweeks
1355 East Center - Pocatello, Idaho 83201
Phone: (208) 233-0501 Fax: (208) 233-0529 email: esa@engsystems.com

PROJECT: HVAC UPGRADE FOR: PROPERTY # 521-1514 ZONE 5 | SEC 5 | PLAT 004 | PARCEL 15

LDS LAIE 1,8,9

LAIE, HAWAII

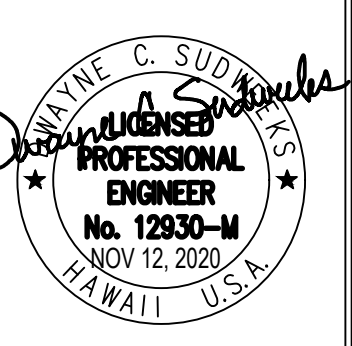
55-1109 LANIHULI ST

MECHANICAL SECTION VIEWS

SHEET TITLE:

MECHANICAL LEGEND

SYMBOL	DESCRIPTION
①	ELECTRONIC THERMOSTAT
FC	EQUIPMENT SYMBOL
CHD	HAND DAMPER
[Symbol]	ROUND BRANCH DUCT WITH HAND DAMPER
[Symbol]	INSULATED FLEXIBLE DUCT
[Symbol]	RETURN AIR OR EXHAUST GRILLE
[Symbol]	CEILING DIFFUSER



DRWN. BY: T DAVIS
CKD. BY: D.SUDWECKS
JOB NO: 20040
DATE: NOV 2020

SHEET: ME2.2
OF: 13